

ANNEXURE :- 02

SPECIFICATIONS FOR SETTING UP OF MILK BOOTH AT LANGAR TARAKOTE ENROUTE VAISHNO DEVI SHRINE.

1. Wall & partition

Providing and fixing Walls & Partitions Frame made from Smart Steel Framing System of CRG550 Zincalume or equivalent make, 75mm channel for walls 2'-0" c/c horizontal and vertical/ as per drawing covered with 3mm external grade (GR33ACP) ACP of Alstrom/Timex/ equivalent approval make from outside and 8mm th. cement Fiber Board from inner side, including preparation of surface, priming coat and painting with oil bound distemper Complete in all respects as directed by the E-in-C

2 . Roofing: -

Providing and fixing of plain/ ribbed metal decor roofing of 0.5mm th. of feb JSW Steel Ltd./ Tata Blue Scope or equivalent make pre-coated, fixed to the frame as per manufacturer's specifications/ Arch. Drawings, including heat insulation sheet duly leak proofed, including gutter, and zincalume bend for Rain Water complete in all respects as directed by the E-in-C.

3 False Ceiling: -

Providing and fixing Gypsum false Ceiling as per manufacturer's specifications and drawings including cutting for Ceiling lights and painting etc. Complete in all respects as directed by the E-in-C.

4 Flooring: -

Providing and laying Vitrified Tiles in flooring, skirting & plinth protection (of Size 600mm x 600 mm) and 6mm to 8mm thickness, of reputed manufacturer (such as Kajaria, Naveen, Diamontile (to be got approved before arranging) color range:-Off white, Ivory, light brown, Light Grey, etc. laid over 20mm thick (average) base of cement sand mortar 1:3 (one part cement: 3 part coarse sand) and filling of joints with white cement slurry mixed with pigment to match the colour/shade of tiles. Complete in all respects as directed by the E-in-C

5. Door: -

Providing and fixing Door made from 14G standard aluminum section of required size/ as per drawing and shutters fitted front side finished 3mm th grade (GR 33ACP) ACP of Alstrom/Timex/Equal approval make panels and back side with 8mm th cement fiber board duly painted, including the cost of SS fittings, inter/dead lock of approved make. Complete in all respects as directed by E-in-C.

6 Rolling Shutter: -

Providing and fixing in position interlocking rolling shutters of approved make. made of 80mm x 1.25mm M.S. laths, interlocked together through their entire length and jointed together at the end by end locks, mounted on specially designed pipe shaft, with brackets, side guides 27.5cm long wire spring grade No.2 and arrangement for inside and outside locking with push and pull operation and top cover 0.80mm thick, Including providing and applying one coat of metal primer and 2 or more coats of enamel paint of an approved quality. Complete in all respects as directed.

7 Service Counter: -

Providing and fixing granite counter, consisting of 19mm thick commercial board fixed on the M.S. Frame supports and P&F 17mm to 20mm thick granite of approved color and shade to be pasted on board with adhesive, complete in all respects to the entire satisfaction of E-in-C.

8 Providing, fabricating and fixing in position projection (front side) finished with 3mm thick Aluminum Composite Paneling (ACP) of approved color and make including P&F M.S. tube frame as per site requirements, Complete in all respects as directed by the E-in-C.

9 Providing and fixing on front (both sides corners) design elements with 1" wide fluorescent tape complete in all respects as directed by the E-in-C

10 All Civil works including construction of platform and foundation for steel columns complete in all respects

11 SURFACE CONDUIT PIPE WIRING SYSTEM WITH MODULAR SWITCHES

Wiring in PVC insulated copper conductor single core FR cable, 1100volts grade to be laid in heavy gauge welded conduit pipe 20 mm/25 mm dia (1.6mm thick) ISI Marked installed on surface etc., complete with powder coated / anodized concealed metal boxes (on surface) required for suitable number of modules, for having electronic fan regulators (two module), 3pin 6Amp., 3pin 16/20 Amp. Sockets and 6 Amp./16/20Amp. Switches etc, and covered with Frame Plate etc, & including the cost of required number of modular switches/sockets, step type electronic fan regulator 100 watts, PVC connector (For Fan Box and Steel Hooks, Circular Inspection Box (Surface Type)) conduit pipe & copper wire and other petty material etc. including the cost of painting as required-

Note :-

1. Make of FR cables -Havells/Finolex or equivalent approved by the E-in-C.
2. Make of Modular switches and accessories etc.-Havells (Crabtree)/Legrand or equivalent approved by the E-in-C.

a Wiring light point - controlled by one switch, in PVC insulated copper conductor single core FR cable (ISI marked - to the approval of E-in-C) overall 1.5 sq. mm, 1100 volts grade.

b) Wiring Fan point - controlled by one switch, in PVC Insulated copper conductor single core FR cable (ISI marked - to the approval of E-in-C) overall 1.5sq. mm, 1100volts grade.

c) Wiring 3 pin 6 Amp. wall socket (Shuttered) point in PVC insulated copper conductor single core FR cable (ISI marked - to the approval of E-in-C) overall 1.5 sq mm, 1100volts grade complete with bonding to existing earth with PVC insulated copper conductor single core FRLS cable (ISI marked) overall 1 sq. mm, 1100volts grade.

Wiring 3 pin 16/20 amp. power plug control (shuttered) and switch.

- 12 Supplying and erection of Miniature circuit breaker (MCB's-TP) 6 to 32 amp (Breaking capacity 10 kA, Curve-C) suitable for 240/415 volts 50 cycles AC supply, to be fixed in the new /existing MCB's including necessary connections, testing and commissioning etc. Complete in all respects as directed by the E-in-c.

Make Havells/ Legrand/ Schneider or equivalent approved

SUPPLY AND FIXING CEILING FANS' - DOUBLE BALL BEARING TYPE MAKE HAVELLS/USHA/BAJAJ ULTIMA/CROMPTON HIBREEZE MODELS

- 13 Supply and fixing of 48" (1200mm) sweep ceiling fan suitable for operation on 230 volts, 50 Hz single phase A.C. supply complete and with necessary down rod with fan regulator etc. , complete in all respects, as directed by the E-in-C.

SUPPLY AND FIXING - EXHAUST FANS DOUBLE BALL BEARING, TYPE POWDER COATED WITH SUITABLE LOUVERS MAKE HAVELLS/USHA/BAJAJ ULTIMA/CROMPTON HIBREEZE MODELS

- 14 Supply and fixing exhaust fan (heavy duty) 9" (225mm sweep), complete in all respects, as directed by the E-in-C.

15 Providing & Fixing LED Lights (circular) in false ceiling etc. as per manufacturer's specifications (Make: - Philips, Havells) to be got approved before arranging as directed by the E-in-C.

- a) 15 watts. L.E.D Lights
- b) 10 watts. L.E.D Lights

16 Earthing work (underground complete job) as directed by the E-in-C.

17. Branding:-

03 side branding on ACP Sheet with backlit letters "VERKA" to be fitted directly on the finished ACP surface of the Milk booth with the size as follows: -

- a) 2 x (2'6" x 4) (Verka Branded)
- b) 1 x (2'6" x 8) (Verka Branded)

Note: - Specification of the Back Lit ACP Board (BLACP) are placed in the table below:

Specifications for BL ACP Signage Boards.

1.	LED Module Back Lit	<ul style="list-style-type: none">A. White color water proof LED of reputed brand,B. Led module with fitting on laser cut acrylic letters in box formatC. Standard Power supply- wire – as per ISI standard. with water proof power supply
----	---------------------	--

Read & Accepted.

Name :-

Address:-

Stamp & Signature.

**The Punjab State Cooperative Milk Producers' Federation Limited
(Milkfed Punjab)
Branch Sales Office, Jammu.**

**BID PROFORMA FOR SETTING UP MILKBOOTH AT LANGAR TARAKOTE,
ENROUTE TO MATA VAISHNO DEVI SHRINE.**

To , Verka Branch Sales Office Jammu, The Punjab State Co-operative Milk Producers' Federation Ltd. C/o M/s Skipper Overseas Pvt. Ltd. Link Road, Marble Market Extension, Trikuta Nagar, Near Rajesh Marble (Murti Wale), Jammu-180011 Email: bojammu@verka.coop Mobile: 9419114174/7889673404	From
	Name of Firm / Proprietor
	Address
	Mobile No:
	Email Id:
	GST No.
	PAN No.

Name:

Address:

Signature & Stamp.

In Case any further information is required the same may be requested by calling 9419114174 or by sending an email at bojammu@verka.coop.

ANNEXURE: - 01

Terms & Conditions	
1	The payment will be made only after the successful completion of the whole job.
2	The payment will be made after statutory deductions as applicable.
3	Any personnel hired by the agency will not have any employee-employer relation with Milkfed Punjab.
4	If felt necessary, Managing Director/Nominee may review the financial status as well as the available infrastructure of the bidders and reserves the right to reject/accept the offer.
5	In case, any complaint is received from anyone, against the successful bidder on account of any misbehavior by the staff, misuse of trademark, pilferage of any commercial information or complaint of similar nature Milkfed may impose appropriate penalty and direct the successful bidder to take corrective steps. If lapses of the above nature are repeated frequently, the agreement can also be terminated by forfeiting the pending bill payments.
6	The successful bidder will also be liable for due the observation and implementation of all the statutory conditions or requirements of labor laws/ other laws as applicable to his/her workforce from time to time.
7	The successful bidder shall not misuse the logo of Milkfed or Verka in any form. Such an act if proved will be viewed very seriously and can result in the cancellation of the agreement by forfeiting the pending bill payment and the entire security amount.
8	The Managing Director reserves the right to make any addition/deletion or change in any term and condition with or without any notice
9	Corrigendum if any, issued on the above advertisement, will be published only on the MILKFED PUNJAB website i.e., www.verka.coop .
10	Area of Operation: Setting up Temporary Kiosk at Langar Tarakote enroute to Mata Vaishno Devi Shrine.
11	Arbitration: In the event of any difference or dispute having arisen out of any contract or agreement at Milkfed level/union level the same shall be referred to The Registrar Cooperative Societies, Punjab to decide the dispute himself or transfer it for disposal to any officer not below rank of Deputy Registrar, Cooperative Societies, Punjab for dispute resolution by the arbitrator. The provisions of the Punjab Cooperative Societies Act, 1961 and rules 1963, as amended up to date shall apply to arbitration proceedings which shall be held in the office of designated arbitrator.
12	Jurisdiction: The jurisdiction of the courts in case of any further legal dispute post arbitration, will be the courts at Chandigarh U.T. only.
13	Timeline for bidding process:

	S.No.	Particular	Time Line
	1	Floating Bid Proforma on Verka Website i.e. www.verka.coop .	17.11.2022 At 11:00 A.M.
	2	Receipt of filled & sealed Bid Proforma at Verka Branch Sales Office Jammu The Punjab State Co-operative Milk Producers' Federation Ltd. C/o M/s Skipper Overseas Pvt. Ltd. Link Road, Marble Market Extension, Trikuta Nagar, Near Rajesh Marble (Murti Wale), Jammu-180011 Email: bojammu@verka.coop Mobile: 9419114174	05.12.2022 before 05:00 P.M.
	3	Opening of Bid Proforma for evaluation	07.12.2022
	Any bid proforma received on 05.12.2022 after 05:00 P.M. will not be considered for evaluation.		
14	The bid has to be submitted in a sealed envelope in the BID PROFORMA to The Punjab State Co-operative Milk Producers' Federation Ltd. C/o M/s Skipper Overseas Pvt. Ltd. Link Road, Marble Market Extension, Trikuta Nagar, Near Rajesh Marble (Murti Wale), Jammu-180011. Any tempered bid or open bid will not be considered for evaluation. The envelope should mention "SETTING UP MILKBOOTH AT LANGAR TARAKOTE" on top of it.		
15	The quality of goods and timely execution of order will be essential. There will be no compromise on this account. Material found substandard will be rejected and returned straightway at the cost of the supplier.		
16	BILLS: All bills/ documents will be raised in favor of The Punjab State Co-operative Milk Producers' Federation Ltd. C/o M/s Skipper Overseas Pvt. Ltd. Link Road, Marble Market Extension, Trikuta Nagar, Near Rajesh Marble (Murti Wale), Jammu-180011.		
17	VALIDATIY OF CONTRACT: The contract shall remain valid on job basis. However, contract can be terminated earlier in case of any breach of contractual obligations and/ or malafide/ undesirable activity on the part of supplier within 15 days of the prior notice. The contract can be extended for a maximum period of one year with mutual consent of the purchaser and supplier at the same rate, terms & conditions. Any substandard material if found after installation done by any party will be blacklisted and the security will be forfeited.		
18	The price quoted should be final and free from escalation and inclusive of commissioning charges. The quoted rates should be inclusive of all taxes, levies, loading/unloading, insurance, measurement expenses, freight, Octroi etc. and no price escalation due to any factor will be permitted at any stage.		
19	INSPECTION: a) he inspection of the material supplied by the successful tenderer shall be carried		

	<p>out by our authorized Inspection Officer/ Officers whose decision regarding quality and quantity will be final and binding. In case of rejection of the material, the supplier will give free replacement without any delay & objection within 15 days. Rejected goods, if not lifted within 15 days of intimation, the same will be disposed off by the consignee at the risk & cost of the supplier. No claim thereafter made by supplier will be entertained.</p> <p>b) Inspection by the Branch Sales Office Jammu or any officer on its behalf, shall not absolve the supplier of the responsibility to provide acceptable product nor shall it preclude subsequent rejection by the Verka Chandigarh Dairy during the use of the material or during the warranty period.</p> <p>c) Consignee shall be at liberty to get the material tested from any outside laboratory. In case material is found not as per the laid down standard, testing charges shall be borne by the supplier.</p> <p>d) Any substandard material if found after installation done by any party will be blacklisted and the security will be forfeited.</p>
20	<p>FORCE MAJEURE: For the purpose of this clause, "Force Majeure" means an event beyond the control of the supplier and not involving the Supplier's fault or negligence and not foreseeable. Such events may include, but are not restricted to acts of the purchaser either in its sovereign or contractual capacity, wars or revolutions, fires, floods, epidemics, quarantine restrictions and freight embargoes. If a Force Majeure situation arises, the supplier shall promptly notify the purchaser in writing of such conditions and the cause thereof. Unless otherwise directed by the purchaser, in writing, the supplier shall continue to perform its obligations under the order as far as is reasonably practicable and shall seek all reasonable practical alternative means for performance not prevented by the Force Majeure event.</p>
21	<p>The bidder will be shortlisted for each job i.e., the job will be allocated to the lowest bidder for the specific job category.</p>
22	<p>The successful bidder has to submit documentary proof such as photographs, videos etc. along with the bills for verification purposes.</p>
23	<p>For any clarification, kindly contact. 9419114174</p>

Read & Agreed All Terms & Conditions

Name:

Address:

Signature & Stamp

ANNEXURE 03:- FINANCIAL BID.

FINANCIAL BID PERFORMA				
S.No	Description	Basic Rate	GST	Total
1	Construction of Verka Milk Booth of Size 8'x4' at Langar Tarakote enroute Vaishno Devi Shrine			

MILKFED

VERKA MILK KIOSK
AT DIFFERENT SITES
IN CHANDIGARH

WORKING DRAWING

NOTES:-

1. ALL DIMENSIONS ARE IN METERS UNLESS OTHERWISE SPECIFIED.
2. THE KIOSK SHALL BE CONSTRUCTED WITH 75MM CHANNEL FOR WALLS.
3. 2'-0" C/C HORIZONTAL AND VERTICAL COVERED WITH 3MM
EXTERNAL GRADE (GR 33 ACP) ACP FROM OUTSIDE AND 8MM
THICK CEMENT FIBER BOARD FROM INNER SIDE COMPLETE AS PER
SPECIFICATION

ELEVATION - C

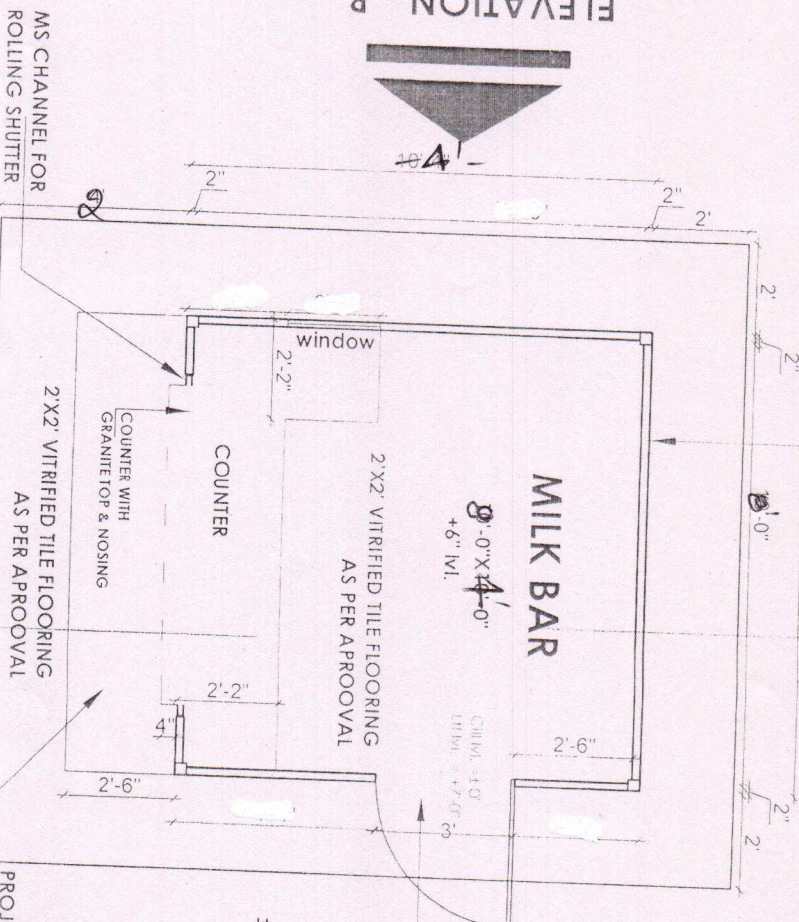
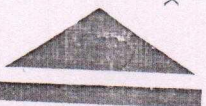
SMART STEEL FRAMING SYSTEM OF 75MM CHANNEL FOR WALLS
2'-0" C/C HORIZONTAL AND VERTICAL COVERED WITH 3MM
EXTERNAL GRADE (GR 33 ACP) ACP FROM OUTSIDE AND 8MM
THICK CEMENT FIBER BOARD FROM INNER SIDE COMPLETE AS PER
SPECIFICATION

Y'

ELEVATION - B



ELEVATION - D



DOOR & WINDOW MADE FROM 14G
STANDARD ALUMINIUM SECTION OF
REQUIRED SIZE SHUTTERS FITTED WITH
FRONT SIDE FINISHED 3MM THICK
EXTERIOR GRADE ACP PANEL AND BACK
SIDE 8MM THICK CEMENT FIBER BOARD
COMPLETE AS PER SPECIFICATION.

±00 I/L.

PROJECTION FINISHED WITH ACP
EXTERIOR GRADE (GR 33 ACP) including
M.S. TUBE FRAME COMPLETE AS PER
SPECIFICATION.

LAYOUT PLAN

ELEVATION - A



TECHNICAL SPECIFICATIONS			
ITEM NO.	DESCRIPTION	UNIT	QTY
1	MILK BAR SIZE	10'-0" X 10'-0"	
2			
3			
4			
5			
6			
7			
8			
9			
10			
11			
12			
13			
14			
15			
16			
17			
18			
19			
20			
21			
22			
23			
24			
25			
26			
27			
28			
29			
30			
31			
32			
33			
34			
35			
36			
37			
38			
39			
40			
41			
42			
43			
44			
45			
46			
47			
48			
49			
50			
51			
52			
53			
54			
55			
56			
57			
58			
59			
60			
61			
62			
63			
64			
65			
66			
67			
68			
69			
70			
71			
72			
73			
74			
75			
76			
77			
78			
79			
80			
81			
82			
83			
84			
85			
86			
87			
88			
89			
90			
91			
92			
93			
94			
95			
96			
97			
98			
99			
100			

By Design

VERKA MILK KIOSK
AT DIFFERENT SITES
IN CHANDIGARH

VERKA MILK KIOSK AT
DIFFERENT SITES IN
CHANDIGARH

NOTES:-

1. *Staphylococcus aureus* (Gram-positive cocci in clusters) is a common cause of skin infections, such as impetigo and abscesses. It is also a leading cause of hospital-acquired infections, including pneumonia and sepsis.

2. *Streptococcus pyogenes* (Gram-positive cocci in chains) is responsible for strep throat, scarlet fever, and skin infections like cellulitis. It can also cause severe complications like necrotizing fasciitis.

3. *Escherichia coli* (Gram-negative rod) is a common inhabitant of the gut, but certain strains can cause food poisoning, urinary tract infections, and even hemolytic uremic syndrome.

4. *Salmonella enterica* (Gram-negative rod) is often associated with foodborne illness, causing symptoms like diarrhea, fever, and abdominal pain. Some strains can lead to severe complications like sepsis.

5. *Pseudomonas aeruginosa* (Gram-negative rod) is a common cause of hospital-acquired pneumonia and infections in immunocompromised individuals. It is also known for its ability to form biofilms on medical devices.

6. *Candida albicans* (Gram-positive yeast) is a common cause of fungal infections, such as thrush and vaginal yeast infections. It can also cause more serious systemic infections in immunocompromised patients.

7. *Aspergillus fumigatus* (Gram-negative filamentous fungus) is a common cause of aspergillosis, a lung infection that can spread to other parts of the body. It is often found in the environment, particularly in soil and decaying organic matter.

8. *Cryptosporidium parvum* (Gram-negative, oval-shaped parasite) is a common cause of gastrointestinal illness, often acquired from contaminated water or undercooked meat.

9. *Toxoplasma gondii* (Gram-negative, pear-shaped parasite) is a common cause of toxoplasmosis, a disease that can affect various organs, including the brain and eyes. It is often spread through contact with cat feces or undercooked meat.

10. *Mycobacterium tuberculosis* (Gram-negative, acid-fast rod) is the causative agent of tuberculosis, a chronic infectious disease that primarily affects the lungs but can spread to other parts of the body.

[illegible]

MILK BAR SIZE
10'-0" X 10'-0"

DRAWING TITLE
ELEVATION A

		DATE	
JOB NO	ORG NO	SCALE	
		FIS	

ACC. 007 EC. 1

MBVA Design

PROJECT CONSULTANCY
ACCREDITED BY THE
PHED (01/2012-2016/2017)
Contact: 0900 200 200 or 0900 200 200

MILKFED

VERKA MILK KIOSK AT
DIFFERENT SITES IN
CHANDIGARH

WORKING DRAWING

NOTES:-

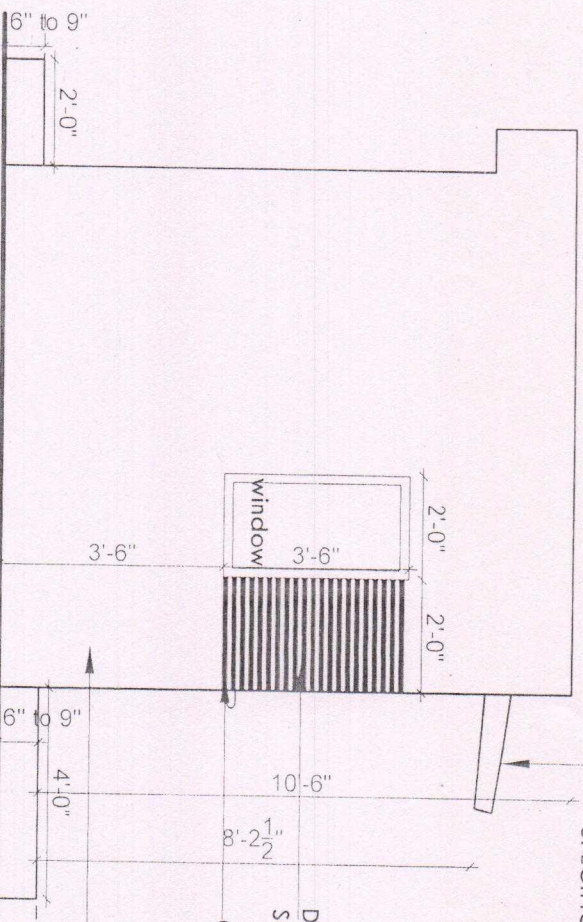
1. The drawing is for the purpose of construction only. It is not to be used for any other purpose. The contractor is responsible for the accuracy of the drawing and the quality of the work.

PROJECTION FINISHED WITH ACP
EXTERIOR GRADE (GR 33 ACP) including
M.S TUBE FRAME COMPLETE AS PER
SPECIFICATION.

DESIGN ELEMENT WITH POLYCARBONATE
SHEET AND 1" WIDE FLUORESCENT TAPE

CHANNELS ON BOTH SIDE FOR SHUTTER RUN

SMART STEEL FRAMING SYSTEM OF 75MM CHANNEL
FOR WALLS 2'-0" C/C HORIZONTAL AND VERTICAL
COVERED WITH 3MM EXTERNAL GRADE (GR 33ACP)
ACP FROM OUTSIDE AND 8MM THICK CEMENT FIBER
BOARD FROM INNER SIDE COMPLETE AS PER
SPECIFICATION.



ELEVATION - B

MILK BAR SIZE
10'-0" X 10'-0"

DRAWING TITLE
ELEVATION - B

JOB NO.	SCALE	DATE
	1/8" = 1'-0"	

VERKA MILK KIOSK AT
DIFFERENT SITES IN
CHANDIGARH

NOTES:

the authors have indicated that the only way to achieve the desired results is to use a "strong" form of the algorithm, which is not the case of the algorithm proposed in this paper. The authors also indicate that the algorithm proposed in this paper is not suitable for the case of a large number of nodes, which is not the case of the algorithm proposed in this paper.

Architectural drawing of a building elevation. The drawing shows a section of a wall with a roofline. Key features and dimensions include:

- Roofline:** A horizontal line at the top, labeled "10'-6\"
- Wall Section:** A vertical section of the wall, labeled "10'-4\"
- Zincalume Bend:** A circular feature on the wall, labeled "ZINCALUME BEND FOR RAIN WATER".
- Exhaust Fan:** A circular feature on the wall, labeled "EXHAUST FAN".
- Dimensions:**
 - Horizontal distance from the roofline to the zincalume bend: "2'-0\"
 - Horizontal distance from the zincalume bend to the exhaust fan: "1'-6\"
 - Vertical distance from the roofline to the zincalume bend: "6\" to 9\"
 - Vertical distance from the zincalume bend to the exhaust fan: "2'-0\"
- Level:** "LVL ±0"
- Notes:**
 - "CHANNEL FOR AL COVERED CP FROM YARD FROM N"
 - "2'-0\"

ELEVATION - C

[illegible]

MILKFEED

VERKA MILK KIOSK AT
DIFFERENT SITES IN
CHANDIGARH

WORKING DRAWING

NOTES:-

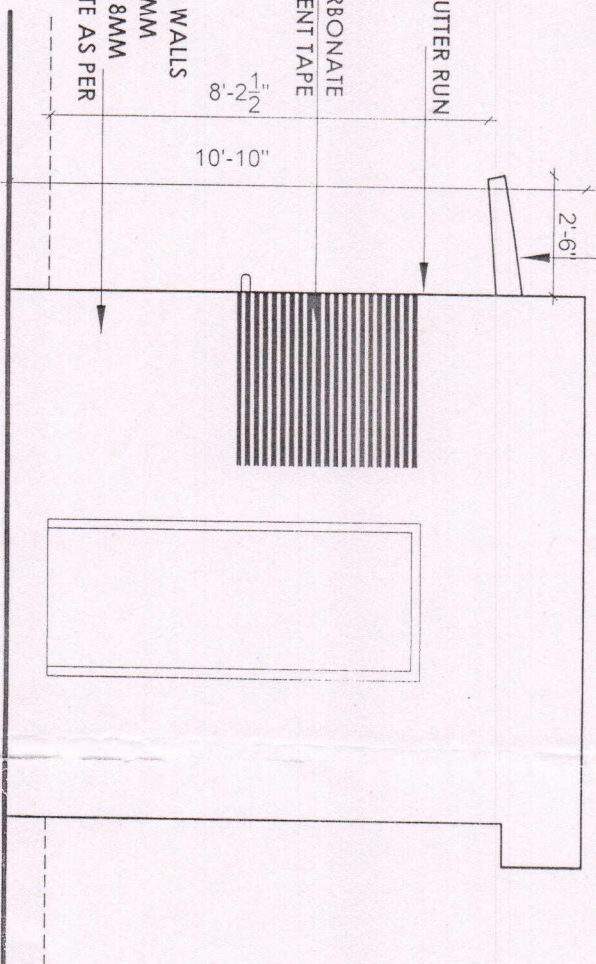
1. The drawing is prepared for the purpose of construction and is not to be used for any other purpose.
2. The drawing is prepared for the purpose of construction and is not to be used for any other purpose.
3. The drawing is prepared for the purpose of construction and is not to be used for any other purpose.
4. The drawing is prepared for the purpose of construction and is not to be used for any other purpose.
5. The drawing is prepared for the purpose of construction and is not to be used for any other purpose.
6. The drawing is prepared for the purpose of construction and is not to be used for any other purpose.
7. The drawing is prepared for the purpose of construction and is not to be used for any other purpose.
8. The drawing is prepared for the purpose of construction and is not to be used for any other purpose.
9. The drawing is prepared for the purpose of construction and is not to be used for any other purpose.
10. The drawing is prepared for the purpose of construction and is not to be used for any other purpose.

PROJECTION FINISHED WITH ACP
EXTERIOR GRADE (GR 33 ACP) including
M.S TUBE FRAME COMPLETE AS PER
SPECIFICATION.

M.S CHANNELS ON BOTH SIDE FOR SHUTTER RUN

DESIGN ELEMENT WITH POLYCARBONATE
SHEET AND 1" WIDE FLUORESCENT TAPE

SMART STEEL FRAMING SYSTEM OF 75MM CHANNEL FOR WALLS
2'-0" C/C HORIZONTAL AND VERTICAL COVERED WITH 3MM
EXTERNAL GRADE (GR 33ACP) ACP FROM OUTSIDE AND 8MM
THICK CEMENT FIBER BOARD FROM INNER SIDE COMPLETE AS PER
SPECIFICATION



ELEVATION - D

REVISIONS

NO.	DATE	DESCRIPTION
1		
2		
3		
4		
5		

MILK BAR SIZE
10'-0" X 10'-0"

DRAWING TITLE

ELEVATION - D

JOB NO.	DATE	DATE
115		

APPROVALS

ARCHITECT

VERKA MILK KIOSK AT

DIFFERENT SITES IN

CHANDIGARH

Project 017 10 0006 10000

www.milkmilkydesign.com

MILKFEED

VERKA MILK KIOSK AT
DIFFERENT SITES IN
CHANDIGARH

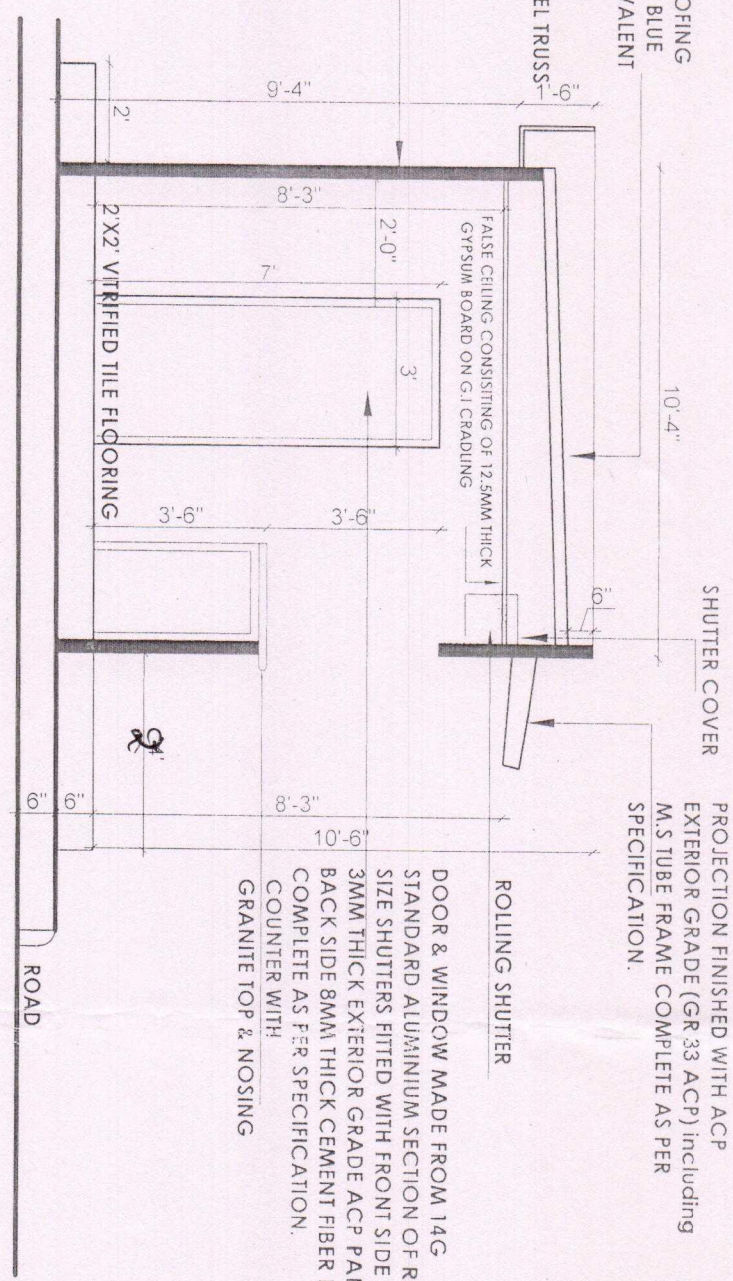
WORKING DRAWING

NOTES:-

1. ALL DIMENSIONS ARE IN METERS UNLESS OTHERWISE SPECIFIED.
2. THE DRAWING IS TO BE USED FOR THE CONSTRUCTION OF THE KIOSK.
3. THE KIOSK IS TO BE CONSTRUCTED IN ACCORDANCE WITH THE SPECIFICATIONS.
4. THE KIOSK IS TO BE CONSTRUCTED IN ACCORDANCE WITH THE SPECIFICATIONS.
5. THE KIOSK IS TO BE CONSTRUCTED IN ACCORDANCE WITH THE SPECIFICATIONS.

RIBBED METAL DECOR ROOFING
OF 0.5MM THICK OF TATA BLUE
SCOPE/JSW LTD. OR EQUIVALENT
MAKE INCLUDING HEAT
INSULATION, SHEET DULY
SUPPORTED BY SMART STEEL TRUSS-
AS PER DRAWING

SMART STEEL FRAMING SYSTEM OF 75MM
CHANNEL FOR WALLS 2'-0" C/C
HORIZONTAL AND VERTICAL COVERED
WITH 3MM EXTERNAL GRADE (GR 33ACP)
ACP FROM OUTSIDE AND 8MM THICK
CEMENT FIBER BOARD FROM INNER SIDE
COMPLETE AS PER SPECIFICATION



SECTION - YY'

MILK BAR SIZE
10'-0" X 10'-0"

REVISIONS

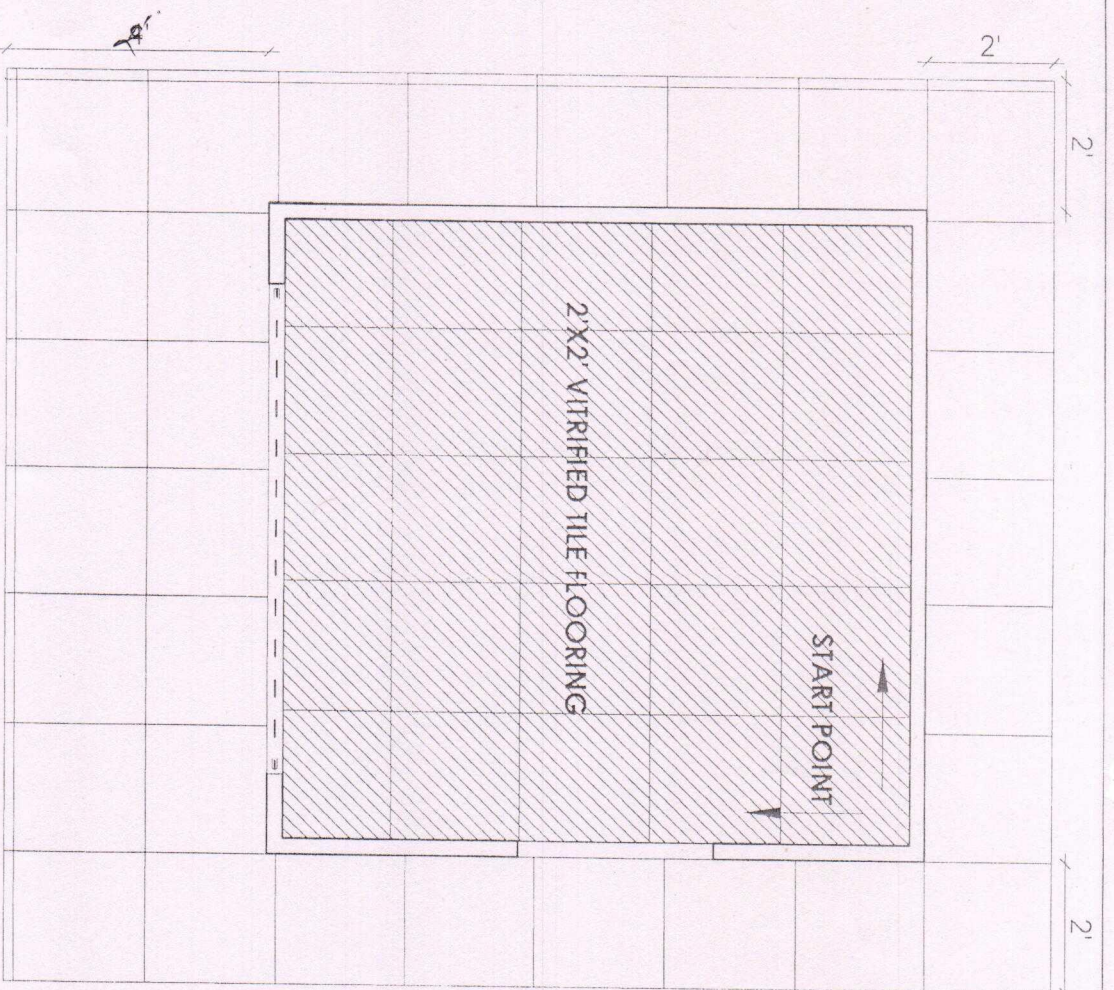
NO.	DATE	DESCRIPTION
1	10/10/2023	ISSUED FOR TENDER
2	10/10/2023	ISSUED FOR TENDER
3	10/10/2023	ISSUED FOR TENDER

DESIGNED BY

VERKA MILK KIOSK AT
DIFFERENT SITES IN
CHANDIGARH

VERKA MILK KIOSK AT
DIFFERENT SITES IN
CHANDIGARH

-129-



MILKKEED
VERKA MILK KIOSK AT
DIFFERENT SITES IN
CHANDIGARH

WORKING DRAWING
NOTES:

1. ALL DIMENSIONS ARE IN METERS UNLESS OTHERWISE SPECIFIED.
2. THE DRAWING IS TO BE USED FOR THE PURPOSE OF THE PROJECT ONLY.
3. THE DRAWING IS NOT TO BE USED FOR ANY OTHER PURPOSE.
4. THE DRAWING IS NOT TO BE USED FOR ANY OTHER PURPOSE.
5. THE DRAWING IS NOT TO BE USED FOR ANY OTHER PURPOSE.

REVISIONS

NO.	DESCRIPTION	DATE
1		
2		
3		
4		
5		

MILK BAR SIZE
10'-0" X 10'-0"

DRAWING TITLE
FLOORING PLAN

NO.	DATE	BY	CHKD.
1			
2			
3			
4			
5			

City Design
ARCHITECTS & INTERIORS
CHANDIGARH

VERKA MILK KIOSK AT
DIFFERENT SITES IN
CHANDIGARH

NOTES:

[illegible][illegible]

MILK BAR SIZE
10'-0" X 10'-0"

DRAWING TITLE -
FALCON CATHODE PROBE
ELECTRONIC ASSEMBLY

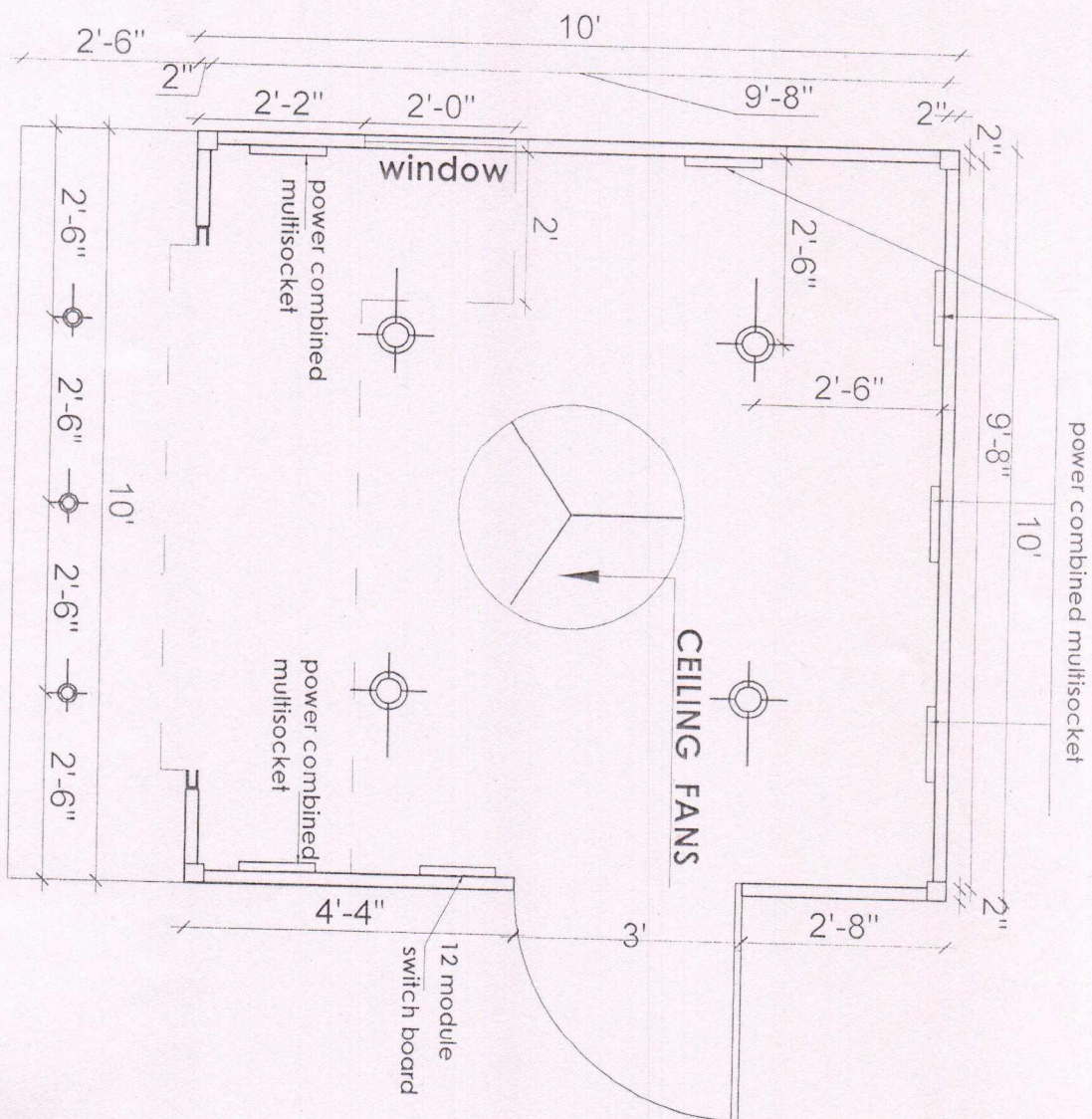
DATE			
JOB NO	DRG NO	SCALE	
		ITS	

APC 100116

monby Design

ARCHITECTURE INTERIOR DESIGN LANDSCAPE
PROJECT CONSULTANCY

2000, 2001, 2002, 2003, 2004, 2005, 2006, 2007, 2008, 2009, 2010, 2011, 2012, 2013, 2014, 2015, 2016, 2017, 2018, 2019, 2020, 2021, 2022, 2023, 2024, 2025, 2026, 2027, 2028, 2029, 2030, 2031, 2032, 2033, 2034, 2035, 2036, 2037, 2038, 2039, 2040, 2041, 2042, 2043, 2044, 2045, 2046, 2047, 2048, 2049, 2050, 2051, 2052, 2053, 2054, 2055, 2056, 2057, 2058, 2059, 2060, 2061, 2062, 2063, 2064, 2065, 2066, 2067, 2068, 2069, 2070, 2071, 2072, 2073, 2074, 2075, 2076, 2077, 2078, 2079, 2080, 2081, 2082, 2083, 2084, 2085, 2086, 2087, 2088, 2089, 2090, 2091, 2092, 2093, 2094, 2095, 2096, 2097, 2098, 2099, 2100, 2101, 2102, 2103, 2104, 2105, 2106, 2107, 2108, 2109, 2110, 2111, 2112, 2113, 2114, 2115, 2116, 2117, 2118, 2119, 2120, 2121, 2122, 2123, 2124, 2125, 2126, 2127, 2128, 2129, 2130, 2131, 2132, 2133, 2134, 2135, 2136, 2137, 2138, 2139, 2140, 2141, 2142, 2143, 2144, 2145, 2146, 2147, 2148, 2149, 2150, 2151, 2152, 2153, 2154, 2155, 2156, 2157, 2158, 2159, 2160, 2161, 2162, 2163, 2164, 2165, 2166, 2167, 2168, 2169, 2170, 2171, 2172, 2173, 2174, 2175, 2176, 2177, 2178, 2179, 2180, 2181, 2182, 2183, 2184, 2185, 2186, 2187, 2188, 2189, 2190, 2191, 2192, 2193, 2194, 2195, 2196, 2197, 2198, 2199, 2200, 2201, 2202, 2203, 2204, 2205, 2206, 2207, 2208, 2209, 2210, 2211, 2212, 2213, 2214, 2215, 2216, 2217, 2218, 2219, 2220, 2221, 2222, 2223, 2224, 2225, 2226, 2227, 2228, 2229, 2230, 2231, 2232, 2233, 2234, 2235, 2236, 2237, 2238, 2239, 2240, 2241, 2242, 2243, 2244, 2245, 2246, 2247, 2248, 2249, 2250, 2251, 2252, 2253, 2254, 2255, 2256, 2257, 2258, 2259, 2260, 2261, 2262, 2263, 2264, 2265, 2266, 2267, 2268, 2269, 2270, 2271, 2272, 2273, 2274, 2275, 2276, 2277, 2278, 2279, 2280, 2281, 2282, 2283, 2284, 2285, 2286, 2287, 2288, 2289, 2290, 2291, 2292, 2293, 2294, 2295, 2296, 2297, 2298, 2299, 2300, 2301, 2302, 2303, 2304, 2305, 2306, 2307, 2308, 2309, 2310, 2311, 2312, 2313, 2314, 2315, 2316, 2317, 2318, 2319, 2320, 2321, 2322, 2323, 2324, 2325, 2326, 2327, 2328, 2329, 2330, 2331, 2332, 2333, 2334, 2335, 2336, 2337, 2338, 2339, 2340, 2341, 2342, 2343, 2344, 2345, 2346, 2347, 2348, 2349, 2350, 2351, 2352, 2353, 2354, 2355, 2356, 2357, 2358, 2359, 2360, 2361, 2362, 2363, 2364, 2365, 2366, 2367, 2368, 2369, 2370, 2371, 2372, 2373, 2374, 2375, 2376, 2377, 2378, 2379, 2380, 2381, 2382, 2383, 2384, 2385, 2386, 2387, 2388, 2389, 2390, 2391, 2392, 2393, 2394, 2395, 2396, 2397, 2398, 2399, 2400, 2401, 2402, 2403, 2404, 2405, 2406, 2407, 2408, 2409, 2410, 2411, 2412, 2413, 2414, 2415, 2416, 2417, 2418, 2419, 2420, 2421, 2422, 2423, 2424, 2425, 2426, 2427, 2428, 2429, 2430, 2431, 2432, 2433, 2434, 2435, 2436, 2437, 2438, 2439, 2440, 2441, 2442, 2443, 2444, 2445, 2446, 2447, 2448, 2449, 2450, 2451, 2452, 2453, 2454, 2455, 2456, 2457, 2458, 2459, 2460, 2461, 2462, 2463, 2464, 2465, 2466, 2467, 2468, 2469, 2470, 2471, 2472, 2473, 2474, 2475, 2476, 2477, 2478, 2479, 2480, 2481, 2482, 2483, 2484, 2485, 2486, 2487, 2488, 2489, 2490, 2491, 2492, 2493, 2494, 2495, 2496, 2497, 2498, 2499, 2500, 2501, 2502, 2503, 2504, 2505, 2506, 2507, 2508, 2509, 2510, 2511, 2512, 2513, 2514, 2515, 2516, 2517, 2518, 2519, 2520, 2521, 2522, 2523, 2524, 2525, 2526, 2527, 2528, 2529, 2530, 2531, 2532, 2533, 2534, 2535, 2536, 2537, 2538, 2539, 2540, 2541, 2542, 2543, 2544, 2545, 2546, 2547, 2548, 2549, 2550, 2551, 2552, 2553, 2554, 2555, 2556, 2557, 2558, 2559, 2560, 2561, 2562, 2563, 2564, 2565, 2566, 2567, 2568, 2569, 2570, 2571, 2572, 2573, 2574, 2575, 2576, 2577, 2578, 2579, 2580, 2581, 2582, 2583, 2584, 2585, 2586, 2587, 2588, 2589, 2590, 2591, 2592, 2593, 2594, 2595, 2596, 2597, 2598, 2599, 2600, 2601, 2602, 2603, 2604, 2605, 2606, 2607, 2608, 2609, 2610, 2611, 2612, 2613, 2614, 2615, 2616, 2617, 2618, 2619, 2620, 2621, 2622, 2623, 2624, 2625, 2626, 2627, 2628, 2629, 2630, 2631, 2632, 2633, 2634, 2635, 2636, 2637, 2638, 2639, 2640, 2641, 2642, 2643, 2644, 2645, 2646, 2647, 2648, 2649, 2650, 2651, 2652, 2653, 2654, 2655, 2656, 2657, 2658, 2659, 2660, 2661, 2662, 2663, 2664, 2665, 2666, 2667, 2668, 2669, 2670, 2671, 2672, 2673, 2674, 2675, 2676, 2677, 2678, 2679, 2680, 2681, 26



ELECTRICAL PLAN